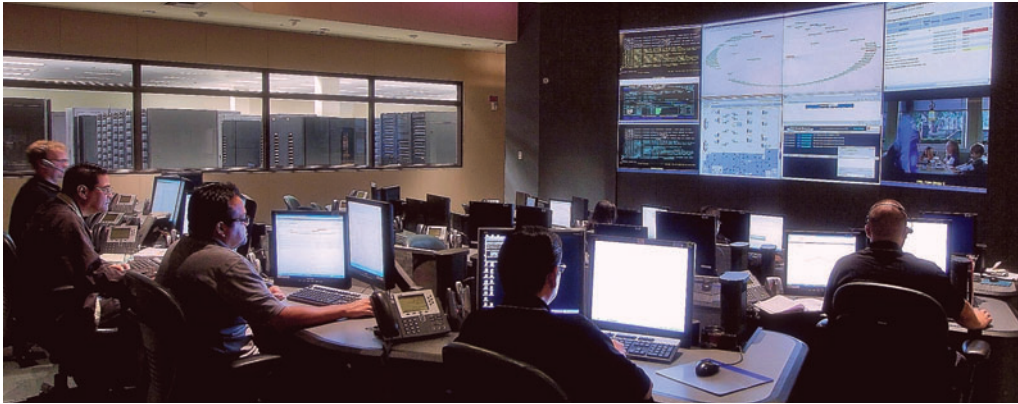




# Our IT Advantage: Trusted *and* State-of-the-Art

CoreLogic® is built on global information access, analytics, and service — fast, intelligent, secure technology is fundamental to the success of our business. Dynamic *and* proven, our state-of-the-art technology infrastructure combines flexible on-demand cloud computing, a highly secure unified network, dual purpose-built “super” data centers, and enterprise-level service operations running 24/7 — all of it protected by cutting-edge security trusted worldwide.



CoreLogic operates two fully-redundant data centers overseeing more than 1,600 government and industry locations worldwide.

## Virtualized Optimization

Our virtualized, multi-tenant, cloud-computing IT environment allows us to operate multiple systems as one and deliver increased capacity on demand. Virtualization has transformed our core technologies in other ways too, letting us optimize business processes — ours *and* yours — by pooling server resources, allocating them dynamically, increasing availability of end-user self-service, and focusing network, operational, incident, and compliance management.

## Dynamic Unified Network

Our unified network architecture allows us to operate multiple systems as a single resource capable of routinely providing flexibility, transparency, scalability, and expandability. Optimized to do more with less, it streamlines operational technology capabilities in ways similar to the impact of Web 2.0 on the online user experience — by integrating new levels of speed, flexibility, extensibility, control, and convenience.

## TECHNOLOGY

### Technology Partners

Our trusted IT partners provide tools and solutions that power our state-of-the-art technology infrastructure, including hardware, technologies, and complementary skills and capabilities.

- ▶ Cisco®
- ▶ EMC®
- ▶ f5®
- ▶ Fujitsu®
- ▶ HP®
- ▶ IBM®
- ▶ Microsoft®
- ▶ Service-now.com®
- ▶ Symantec®
- ▶ Verizon®
- ▶ VMware®

## Dual “Super” Data Centers

CoreLogic recently consolidated numerous, far-flung data centers of subsidiaries and business units into a pair of matched, purpose-built, fully redundant super centers. Designed to provide maximum flexibility, scalability, manageability, and security, the two 80,000 square-foot centers utilize the latest operational, storage, and security technologies—and anticipate those to come.



CoreLogic’s powerful, highly flexible data centers align our infrastructure with your business strategy by automating visibility, verification, compliance, cost-control, and security.

## Enterprise-Level Services

Corporations and governments around the world trust our IT infrastructure to provide continuous error-free enterprise-level services, including uninterrupted network availability, constant on-demand capacity auto-tuning, ongoing customer-specific security and regulatory compliance, and immediate, knowledgeable, sympathetic technical support.

## Around-the-Clock Operations

No matter where you operate, we’re always *on*. Our recently unified state-of-the-art technology infrastructure is designed to support a “flat” interconnected global workplace, where clients many time zones away need routine midday services and solutions in the middle of our night.

This not only means that our technology and connectivity must run at full strength 24/7, but that our experts must be available at — literally — any time of day or night. And our nighttime problem-solvers must be the same-level ITIL-certified experts as those staffing daytime operations.

We do run at full strength with always-available experts 24/7. So if something goes wrong at three in the morning, we are always there — ready to diagnose problems, recommend fixes, provide guidance and solutions.



CoreLogic ITIL-certified support and incident-management professionals are on duty around the clock.



CoreLogic services are ready for you any time of the day or night, whether you’re in New York, New Delhi, or Beijing.

## On-Demand Capacity

With the growing use of data-intensive applications, company information volume can quickly outgrow forecasts. Our virtualized technology environment gives you maximum on-demand scalability with minimum hassle — making it quick and easy to expand your capacity or upgrade your services when the need arises.

## Built-In Collaboration

Our virtualized technology and unified network also enable a unified communication system that speeds and simplifies strategic and project collaboration.



Combining high-definition visual, audio and collaboration technologies, our TelePresence studios provide immersive meeting environments.

From voice-over-IP telephony to online collaborative workspaces to full TelePresence video conferencing, our collaboration capabilities enable innovative teamwork, shorten solution development times, and offer device-agnostic “anytime/anywhere” access.

## Mobile Access

Using our mobile-access capability, you can see CoreLogic content you work with at your office when you’re in the field — content optimized for your mobile device. You can stay up-to-date with current facts no matter where you are, always making

decisions based on the latest information.

Although all CoreLogic programs are not yet mobile-ready (we are working to provide mobile access to most of them), our system makes universal access possible by facilitating automatic device-detection and Web Oriented Architecture (WOA)-supported browser operation.

## Service-Level Agreements and Client Managers

Our service-level agreements (SLAs) describe in detail the services we supply to you as well as the tools and capabilities we provide you to measure our effectiveness. Our agreements define service standards, performance responsibilities, and delivery timeframes. Whether or not you choose an SLA, however, you are assigned a client manager to help accomplish your goals.



Our client managers work closely with you to quantify, measure and realize your goals.

## Security and Compliance

With virtualization, data is delivered as though it originated on a single server — even when several servers may actually be involved. Since this effectively decouples digital resource and physical location, we now treat these two aspects of infrastructure security as intersecting but separate security categories.

## Physical Security

Our data centers are designed to embody the highest standards of location and environmental security — and to evolve with the ever-advancing technologies they house and protect. Both of our highly secure super centers are located on company campuses and managed by ITIL-certified professionals (nearly 400 IT managers, supported by 12,000+ IT associates worldwide).



Mounted on massive “base isolator” shock absorbers, our data centers can survive earthquakes many times the magnitude of the 1906 San Francisco quake.

## Digital Security

Our digital security system provides layered protection to both traditional servers and virtual machines in our cloud environment. Specially dedicated virtual machines scan the system continuously, detecting and preventing intrusions, monitoring firewall integrity, inspecting logs for anomalies, identifying and quarantining malware, detecting and preventing data breaches.



Our high-security data centers are designed to scale smoothly, with minimal disruption — both physically and digitally—as demand evolves.

## Compliance

With mushrooming data volume, increasingly sophisticated external threats, and ever more complex government regulations, we have developed a three-part risk management approach to compliance. Our program rigorously manages regulatory compliance, systems-configuration compliance, and system vulnerabilities — while classifying and treating all compliance-affected information according to its degree of risk and assigning conservative protective priorities.

## Business Continuity, Disaster Recovery

Business continuity planning and disaster recovery (BC/DR) are built into our IT infrastructure. Dual redundant data centers, virtualized cloud environment, and unified network provide the platform for sophisticated program, system, and structural protections across our infrastructure. Together they ensure that 100% of your informational assets will survive in 99.9% of disaster events, that no matter what might happen — outage, natural disaster, whatever — you will have the information and systems you need afterward to continue operating.

FOR MORE INFORMATION PLEASE CALL 1-866-774-3282

© 2010 CoreLogic

CORELOGIC is a registered trademark of CORELOGIC  
All other trademarks are the property of their respective holders.

1-ITADV-1110-00



CoreLogic®

corelogic.com