



CoreLogic®

Property Information & Analytics

# Spatial & Property Data Insight

## For Utilities Companies

Gas, electric, water and telecommunications companies have a need to install, repair and upgrade their equipment and facilities located on property owned by other entities. In order to perform these activities, it is critical to obtain access rights to the properties on which work needs to be performed.

Understanding ever-changing property and parcel details are crucial to effectively maintaining equipment and facilities, preparing for emergencies or monitoring areas of growth. To create right of way agreements, companies need to verify property location on parcel maps, find property owner contact information, and identify all properties associated with a property owner. By combining property and geospatial data, CoreLogic® has created a powerful suite of data-driven geographic information system (GIS) solutions to help optimize decision support for utility and telecommunication companies. Precise geospatial attributes and deep property data insight enables:

- Effective management of assets
- Proactive preparation for response to emergencies
- Increased ability to monitor areas of potential growth including
  - Identify regions of population concentration to uncover areas of population growth
  - Determine when to build or increase service infrastructure
  - Access information to aid with right of way or easement agreements

### Solutions

Whether you need the exact location of parcels or require full geographical insight into a property, CoreLogic has a comprehensive set of solutions that help our customers in several ways:

- **RealQuest®** – One source of property information, homeowner data and real estate analytics
- **Connect2Data®** – Direct access to the industry's most current and comprehensive real estate information database of property and ownership information—locate property detail, ownership, document image and any existing right-of-way easements
- **SpatialRecord** – Single-source, parcel information solution that simplifies land record management for Oil and Gas and Utility Companies—access location and property characteristic information
- **Natural Hazard Risk Solutions** – Our Natural Hazard Risk Solutions help businesses improve natural hazard management by assessing hazard exposure at the property level for storm risks, fire risks, and land-based risks

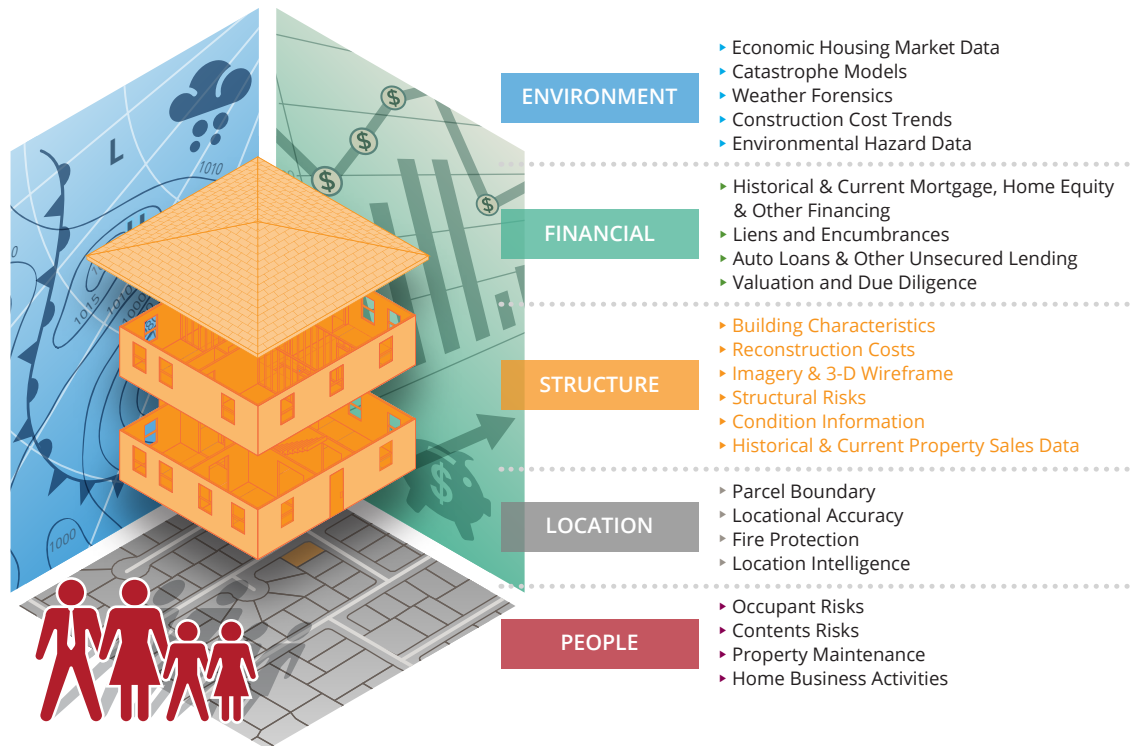
corelogic.com

- **Location Information Solutions** – Include tax boundaries to identify applicable taxing jurisdictions impacting your infrastructure. Street layers with place level attribution for routing and access guidance. Neighborhood layers to help identify boundaries of cities, townships, and counties within your coverage area. Our Location Information Solutions deliver a comprehensive and positionally accurate viewpoint of property locations and their immediate surroundings.

CoreLogic solutions are supported by a variety of delivery options to fit your needs. Whether your company operates its own GIS technology and needs to call in CoreLogic data or you wish to utilize our user-friendly web services, CoreLogic has the appropriate solution and delivery option to meet your needs.

## Accurate and Reliable Data

Aggregating and standardizing property and parcel data across various counties is time consuming and expensive. Yet, this intelligence is critical for many applications. CoreLogic has done the heavy lifting through data collection and normalization—providing you with the peace of mind that the data you rely on is Complete, Current and Connected™.



**CONTACT US TODAY FOR A CONSULTATION.**

**For More Information Visit:**

<https://www.corelogic.com/industry/utilities-solutions.aspx>